

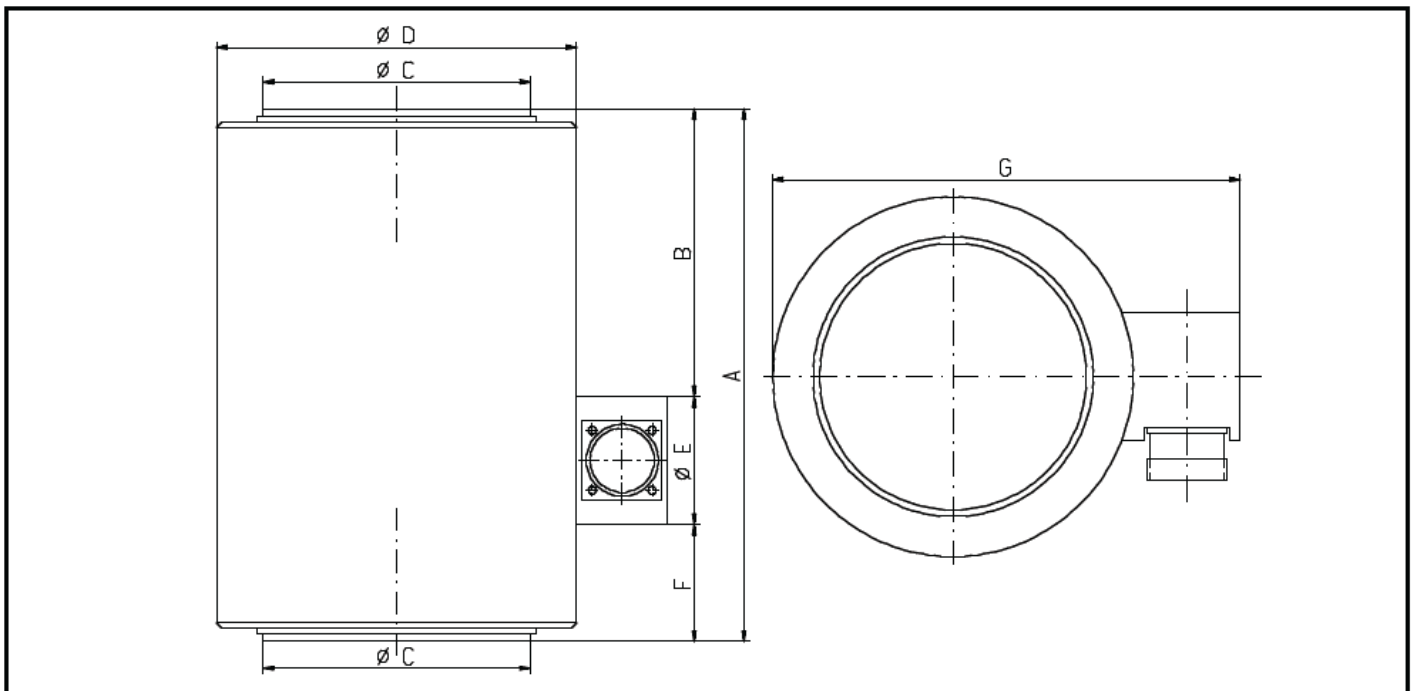
Model 347

压力传感器



- 大量程测试
- 便于安装
- 高精度
- 恶劣环境应用

Test 公司的344系列压力传感器，适用于恶劣环境下的压力测试。传感器由不锈钢制造，安装方便。该传感器的桶式外形结构，使之具有卓越的测量效果。这个系列也可用作QM质量管理体系中的标准传感器。



Series	347		Range in kN	
Class	M		Dimensions in mm	
Nominal sensitivity	mV/V	2	300	5000
Sensitivity tolerance	%	≤ 0,1	600	
Nonlinearity	%	≤ 0,05	1000	
Variation	%	≤ 0,08	2000	
Combined error	%	≤ 0,1	3000	
Reference temperature	°C	21	A	200 200
Nominal temperature range	°C	-10 ... + 40	B	108 108
Creep error after 30 min	%	≤ 0,06	C	∅ 100 ∅ 140
Creep error after 8 h	%	≤ 0,09	D	∅ 135 ∅ 180
Temperature coefficient of the zero signal per 10K within the nominal temperature range	%	≤ 0,01	E	∅ 48 ∅ 48
Temperature coefficient of the sensitivity per 10K within the nominal temperature range	%	≤ 0,005	F	44 44
Stock temperature range	°C	-20 ... + 70	G	175 220
Output resistance at reference temperature	Ω	350 ± 2	<ul style="list-style-type: none"> • White = Sense + • Red = Input + • Blue = Input - • Yellow = Output + • Green = Output - • Black = Sense - • Metal shield 	
Input resistance at reference temperature	Ω	400 ± 25		
Isolation resistance at reference temperature	G Ω	> 2		
Maximum input voltage	V	15		
Nominal range of input voltage	V	1...10		
Break load in reference to nominal load	%	≥ 300		
Max. allowance for dynamic load	%	≥ 70		
Protection class		IP 67		