

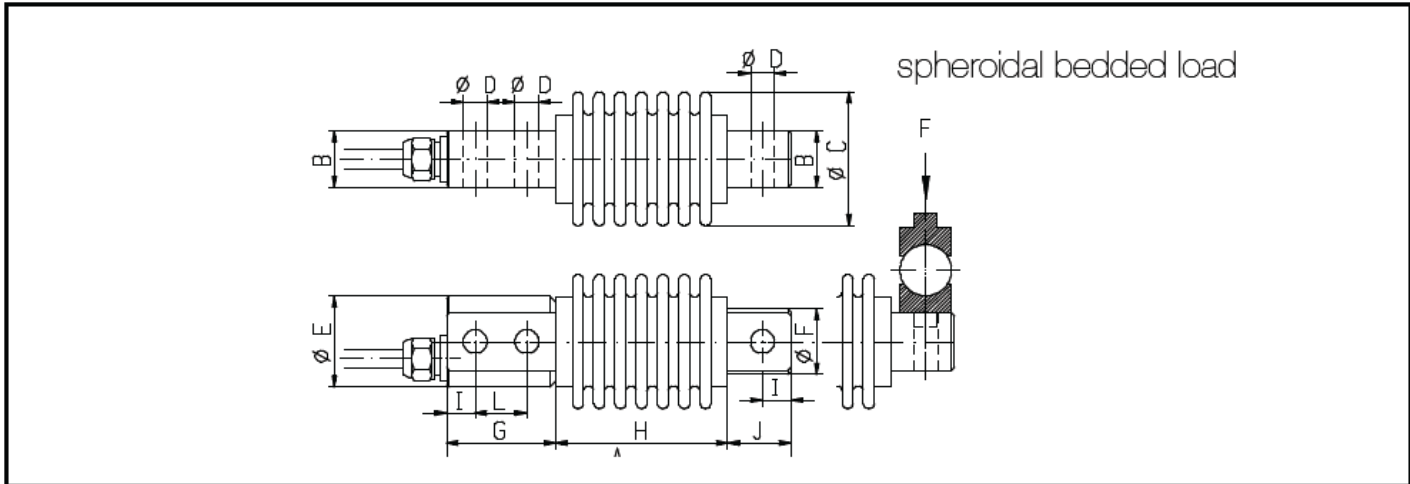
Model 309

测力传感器 / 称重传感器



- 可校准
- 抗横向力
- 高度密封
- 高精度

TesT 公司的307系列弯曲梁传感器，常用于较小的称重和混合秤，在试验装置、研发领域和实验室也可应用。传感器高度密封，不受外界条件变化的影响。我们还可以提供根据 *OIML IR 60* 标准进行校准的特殊规格。



Series		309	309.C3	Range in kg	Dimensions in mm
Class		H	3000d		
Max. number of verification parts	d	2000		25	
Minimum number of verification parts for testing	Vmin	7500		50	
Nominal sensitivity	mV/V	2		100	
Sensitivity tolerance	%	± 0,1		200	
Zero point tolerance	%	± 1			A
Zero point tolerance after 30 min	%	± 0,025			B
Minimum range	%	27			C
Nonlinearity	%	± 0,015			D
Variation	%	± 0,02			E
Combined error	%	± 0,05 ± 0,024			F
Reference temperature	°C	23			G
Nominal temperature range	°C	-10...+40			H
Running temperature range	°C	-20...+70			I
Creep error after 30 min	%	± 0,024			L
Creep error after 20 min	%	± 0,008			
Temperature coefficient of the zero signal per 10K within the nominal temperature range	%	± 0,018			
Temperature coefficient of the zero signal per 10K within the nominal temperature range	%	± 0,01			
Stock temperature range	°C	-30...+80			
Output resistance at reference temperature	W	350 ± 2			
Input resistance at reference temperature	W	400 ± 20			
Isolation resistance at reference temperature	GW	>2			
Maximum input voltage	V	15			
Nominal range of input voltage	V	5...12			
Break load in reference to nominal load	%	> 300			
Max. allowance for dynamic load	%	50			
Max. allowance for traverse load	%	100			
Protection class		IP 67			
Material		NIRO-Stahl			
Weight	kg	2 ; 4,9 ; 8,2			

Label	Value
A	120
B	20
C	Ø 47
D	Ø 8,3
E	Ø 32
F	Ø 23
G	38
H	60
I	10
L	18