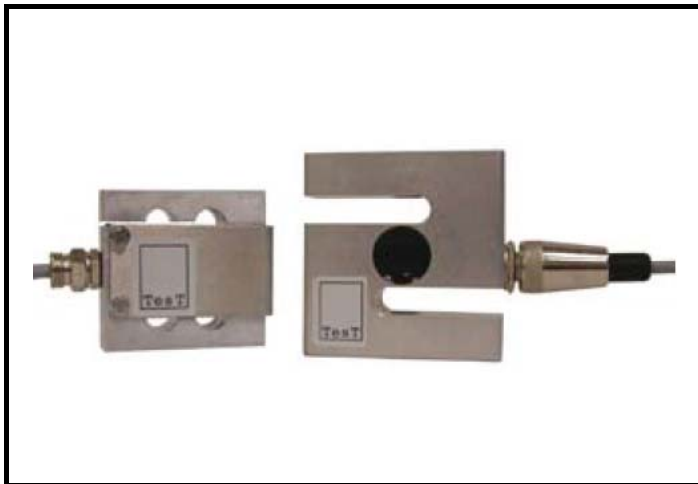


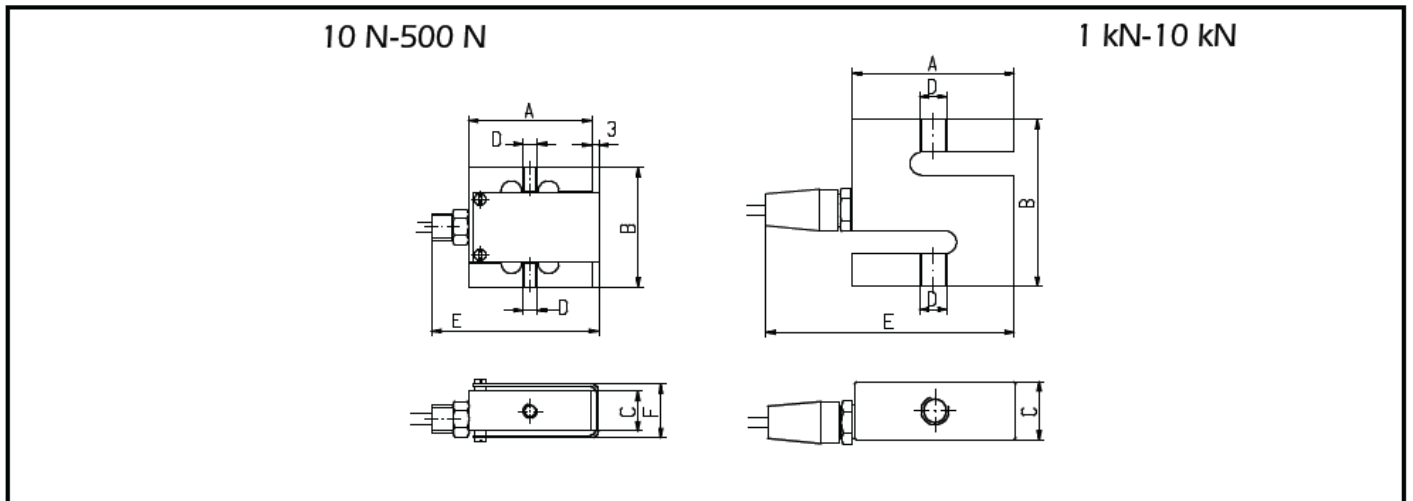
Model 307

测力传感器



- 外形小巧
- 便于安装
- 高精度
- 动态应用

Test 公司的307系列力传感器，常用于空间狭窄、测量精度要求高或有其他特殊要求的场合。传感器由高质铝材或不锈钢制成，拉力和压力测试性能极优。另外，根据特殊要求，可提供用于QM（质量管理）体系中的标准传感器形式。



Series	307		Range in N		
	Class	M	Dimensions in mm		
Nominal sensitivity	mV/V	2	10	1000	
Sensitivity tolerance	%	≤ 0,25	20	2000	
Nonlinearity	%	≤ 0,04	50	5000	
Variation	%	≤ 0,02	100	10.000	
Combined error	%	≤ 0,05	200		
Reference temperature	°C	21	500		
Nominal temperature range	°C	-10... + 50	A	53	70
Creep error after 30 min	%	≤ 0,05	B	52	72
Creep error after 8 h	%	≤ 0,07	C	17	25
Temperature coefficient of the zero signal per 10K within the nominal temperature range	%	≤ 0,06	D	M6	M12
Temperature coefficient of the sensitivity per 10K within the nominal temperature range	%	≤ 0,04	E	71	106
Stock temperature range	°C	-20... +80	F	22	-
Output resistance at reference temperature	Ω	350 ± 5	<ul style="list-style-type: none"> ● White = Sense + ● Red = Input + ● Blue = Input - ● Yellow = Output + ● Green = Output - ● Black = Sense - ● Metal shield 		
Input resistance at reference temperature	Ω	350 ± 10			
Isolation resistance at reference temperature	GΩ	> 5			
Maximum input voltage	V	10			
Nominal range of input voltage	V	1...10			
Break load in reference to nominal load	%	≥ 200			
Max. allowance for dynamic load	%	≥ 70			
Protection class		IP 65			